

MOC3020 THRU MOC3023 OPTOCOUPLEDERS/OPTOISOLATORS

SOES025A – OCTOBER 1986 – REVISED APRIL 1998

APPLICATIONS INFORMATION

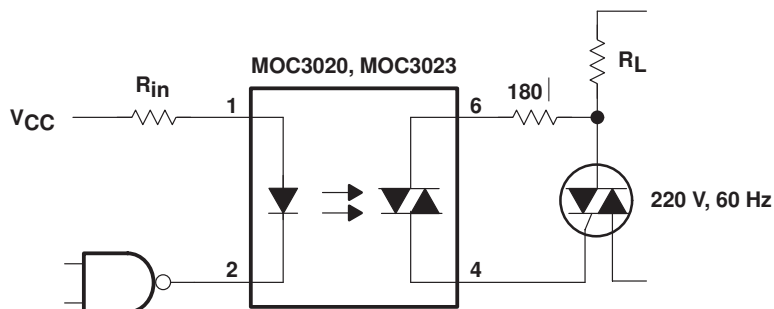


Figure 5. Resistive Load

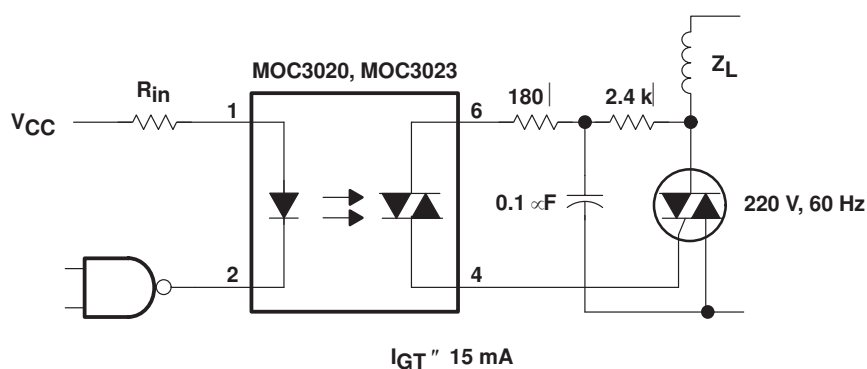


Figure 6. Inductive Load With Sensitive-Gate Triac

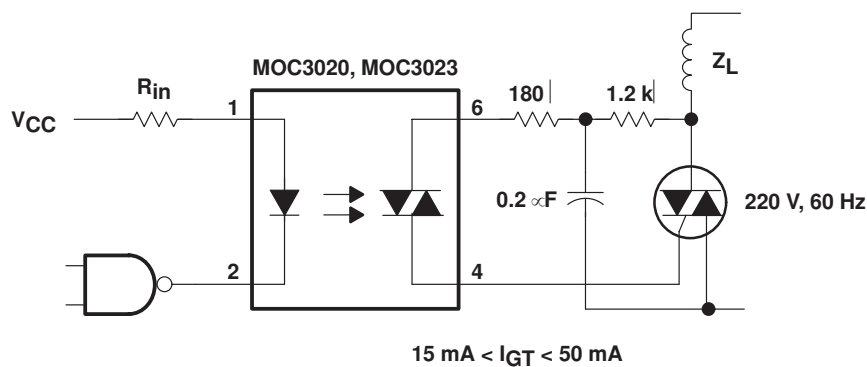


Figure 7. Inductive Load With Nonsensitive-Gate Triac